



Installation & Registration

The following install instructions apply for both the demo and purchased versions of Data Animator. This product works in After Effects 5.5 +higher (Windows and Mac) and Final Cut Pro 4.0 +higher (Mac only).

There are different install locations for Mac and Windows, so please read the appropriate section.

Windows Installation

Data Animator works with all Windows variants, from Win 98 ME through Win XP Pro.

Launch the Data Animator installer and click the 'Next' button to go through the screens. Click the 'Yes' button to accept the License Agreement.

If you are using the purchased version of this product, you will be asked to enter your User Name, Organization, and Serial Number. The serial number was supplied in your product email.

When you reach the 'Destiny Destination' screen, you will need to browse to designate the installation folder. Click on 'Browse' button and navigate to choose the After Effects application folder.

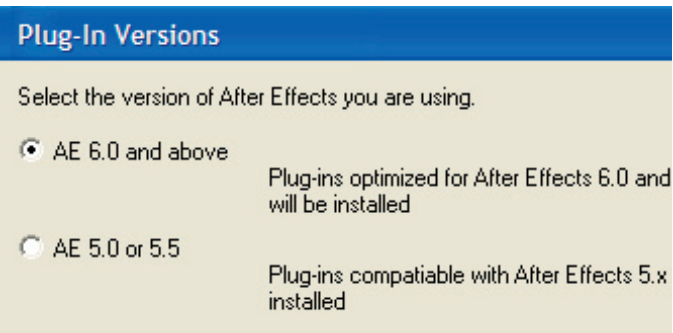
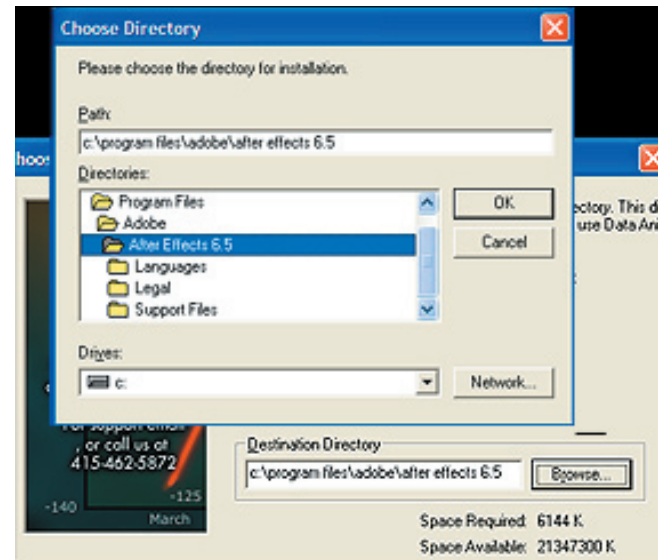
For After Effects, the common install path is:
`C:/Program Files/Adobe/After Effects`

NOTE: Even if the path already looks correct, please 'Browse' to choose that folder. Installers can be finicky. Do NOT first install to your hard drive, then drag the files over.

NOTE: Do not install into the 'Plugins' folder. You must install into the top-level 'After Effects' directory.

The next screen asks you which version of After Effects you'll be installing for. It is important that you select the version number. If you don't select the appropriate version, the plugins may crash or not perform as expected.

You are ready to install. The installer will show a screen informing you of this. Click the 'Next' button to begin installation.





Macintosh Installation

Data Animator works with Mac OS X 10.0 +higher, including 10.4 Tiger.

Launch the Data Animator installer. In the main window, you'll see a pop-up in the lower left corner that asks you to select the installation destination. Click on 'Select Location' and navigate to your After Effects or Final Cut Pro Plug-ins folder. You are now ready to install. Click the 'Install' button.

For After Effects, the common install path is:

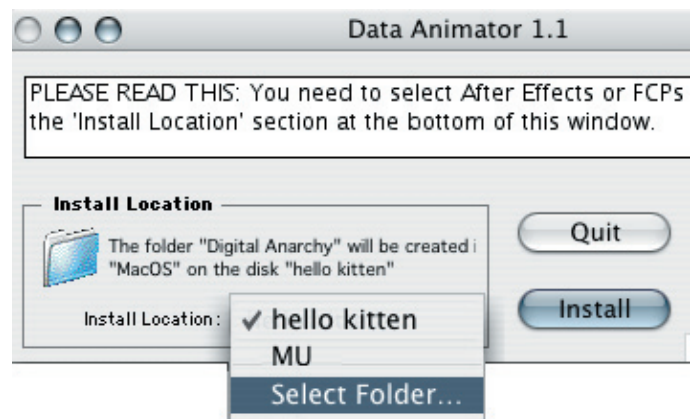
Hard Drive/Applications/Adobe After Effects 7.0/Plug-ins

For Final Cut Pro, the common install path is:

Hard Drive/Library/Application Support/Final Cut Pro System Support/Plug-ins

NOTE: Even if the path already looks correct, please 'Browse' to choose that folder. **Do NOT install to your hard drive, then drag the files over.**

If you are using the purchased version of this product, you will be asked to enter your serial number in a popup box. The serial number is called a 'password'. Click the 'OK' button to begin installation.



How to Apply Data Animator

Data Animator is really easy to get started with. Apply a chart plugin to a layer, then load in a tab-delimited data file.

After Effects: Data Animator can be applied directly to your footage or to its own Solid layer.

Final Cut Pro: Apply Data Animator to its own track above your background footage. The plugin can be applied to a Slug or Color Matte. Click the Options button in the Effect controls in order to access the Load Data button.

Click the Load Button. After applying the chart to a layer, the next thing you should do is twirl down the Data Manager section and click on the Load button. This will allow you to select whatever data file you're going to use. See the Data Manager Section for more information on data files.

Get Support Need more help? First check our Quickstart Guide or the full Data Animator manual. Both are located on this web page: www.digitalanarchy.com/data/data_tutes.html. If you have questions, comments or feature requests, send an email to sales@digitalanarchy.com.