

## General install notes

This document will walk you through the installation of PlasmaFX. It's a very simple process!


This product runs in Mac OS 10.4 +higher. We do not support earlier version of OS 10 for this product or OS 9. PlasmaFX runs in these host applications: After Effects 5.5 +higher, Final Cut Pro 5.1.2 +higher, Motion 2.1 +higher.


This document will help you to install the demo version of PlasmaFX or the purchased version.

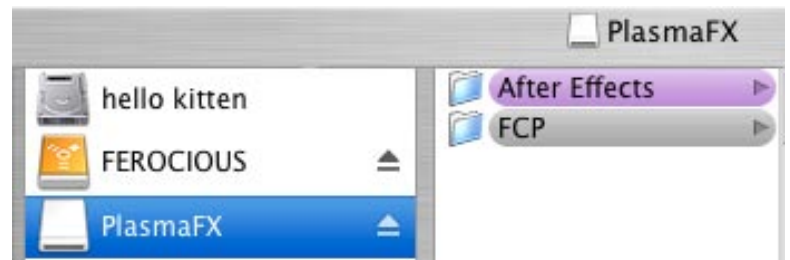
## Get the .dmg file

To install PlasmaFX, first download the installer. It is delivered as a .dmg file.

Double-click the .dmg file that you have downloaded. This will open up a disk that mounts on your hard drive. There are two choices, FCP and After Effects. The FCP option also installs for Motion.

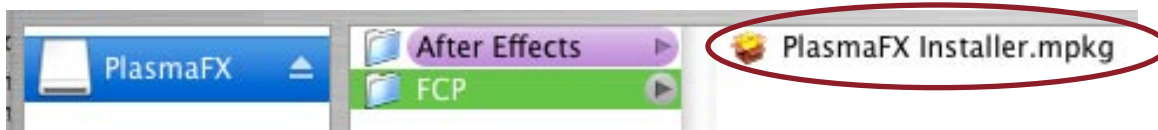
Name	Size	Kind
 plasmaFX.dmg	3.9 MB	disk image file

Name	Size	Kind
 plasmaFX_demo.dmg	3.9 MB	disk image file



## FCP/Motion installation

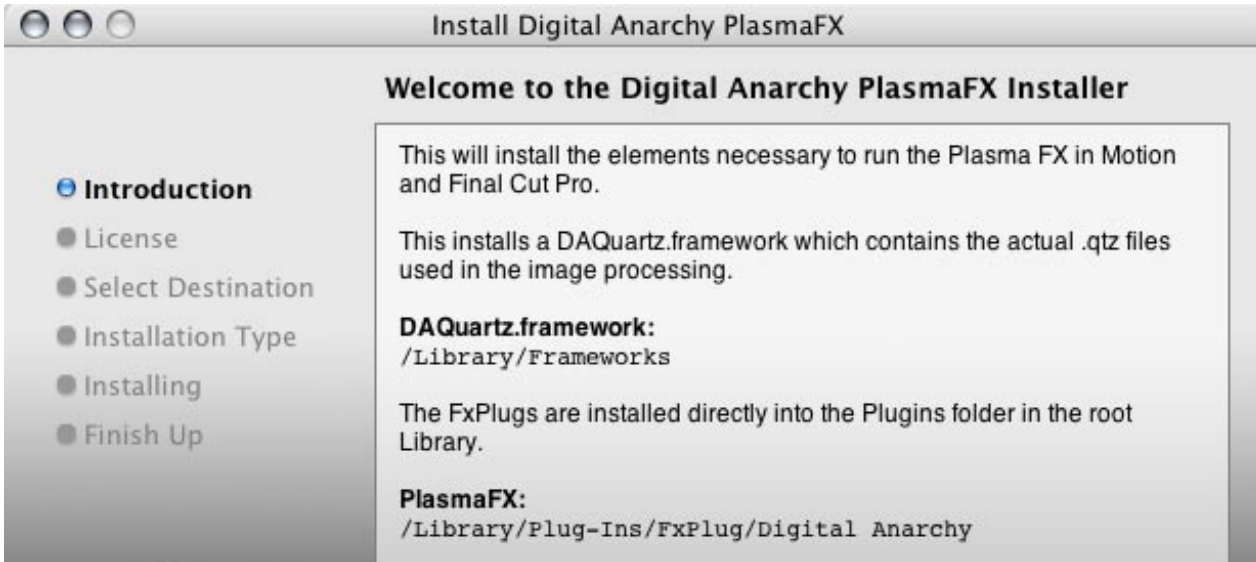
If you are installing for Final Cut Pro and/or Motion, choose the FCP installer, called 'PlasmaFX Installer.mpkg'.



Once you have launched the correct installer, you will see the PlasmaFX installer screen. Click 'Continue' to accept the menu options. You will need to choose the correct hard disk for installation. However, you do NOT need to choose any folder locations. The installer will do this for you.

Just so you know, here is where the plugin is being placed:

[Hard Drive/ Library/ Plug-ins/ FxPlug/ Digital Anarchy](#)



Once you have finished clicking through the screens, you are finished. PlasmaFX has been installed for Final Cut Pro and Motion.

## Enter your serial number

To run in non-demo mode, you will enter your serial number once you apply the product to a layer in the host application. Doing this will activate PlasmaFX for all host applications.

In Final Cut Pro or Motion, click the Register button in a PlasmaFX menu. This will bring up a dialog box that asks for your Name, Organization & Serial Number.



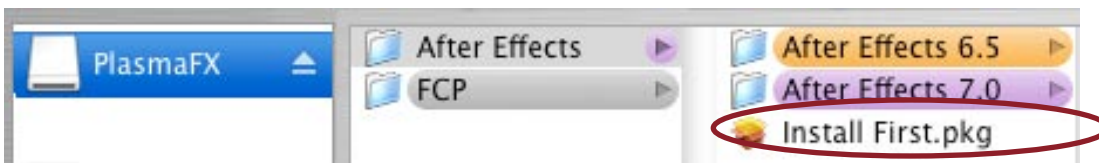
If you have purchased the product, we have already emailed you the information that you need. Please enter the Name, Organization, and Serial Number exactly as we have sent it to you.

Click the OK button to finish.

Enter serial number	
Name	your name
Organization	your company
Serial Number	your serial number

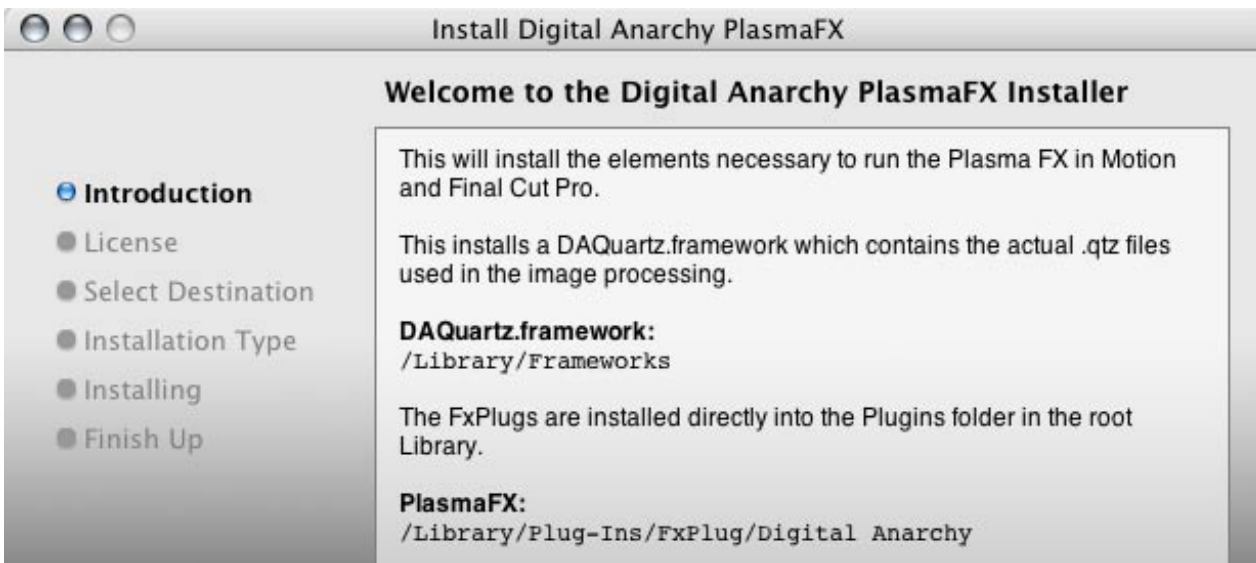
## After Effects installation

If you are installing for After Effects, there are few more steps involved. But all of them are simple! First, choose the After Effects installer option. Next, double-click the 'Install First.pkg' file.



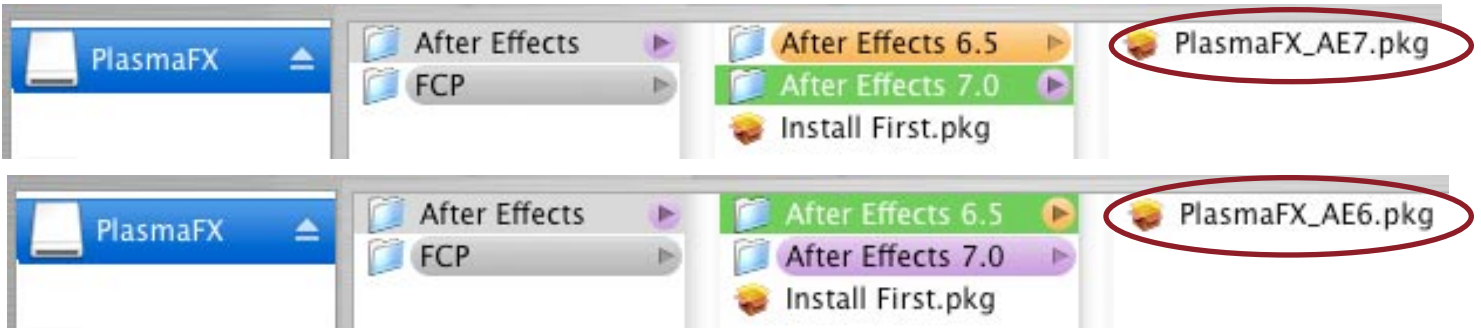
## Run the Install First

'Install First.pkg' will run a general installation of some helper files, called Frameworks. You will need to choose the correct hard disk for installation. However, you do NOT need to choose any folder locations. The installer will do this for you.

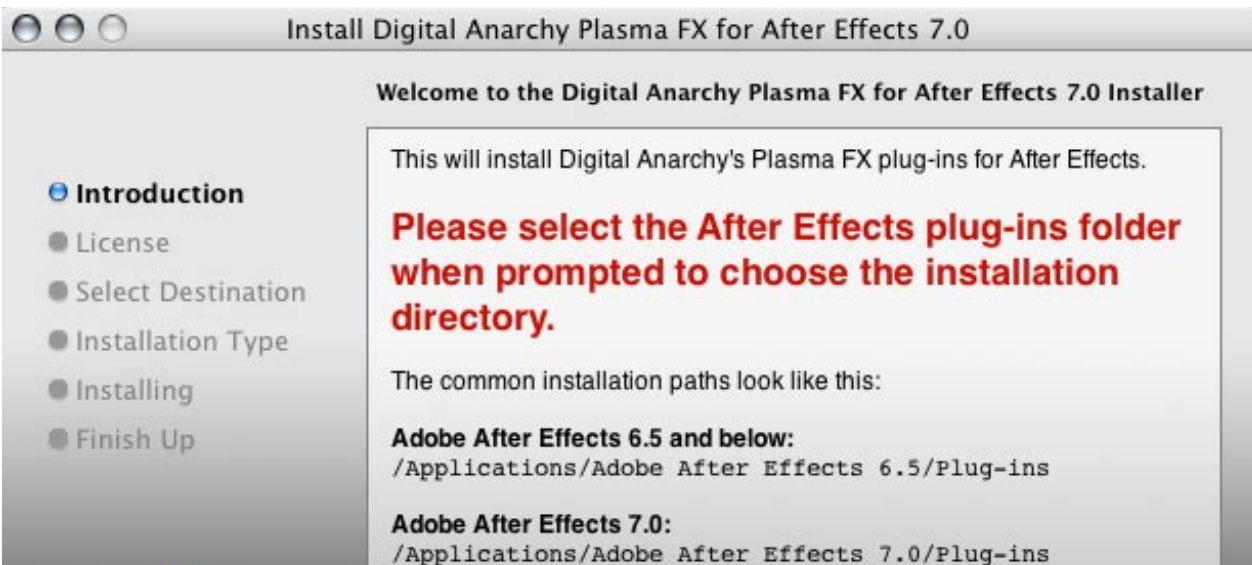


## Run the AE installer

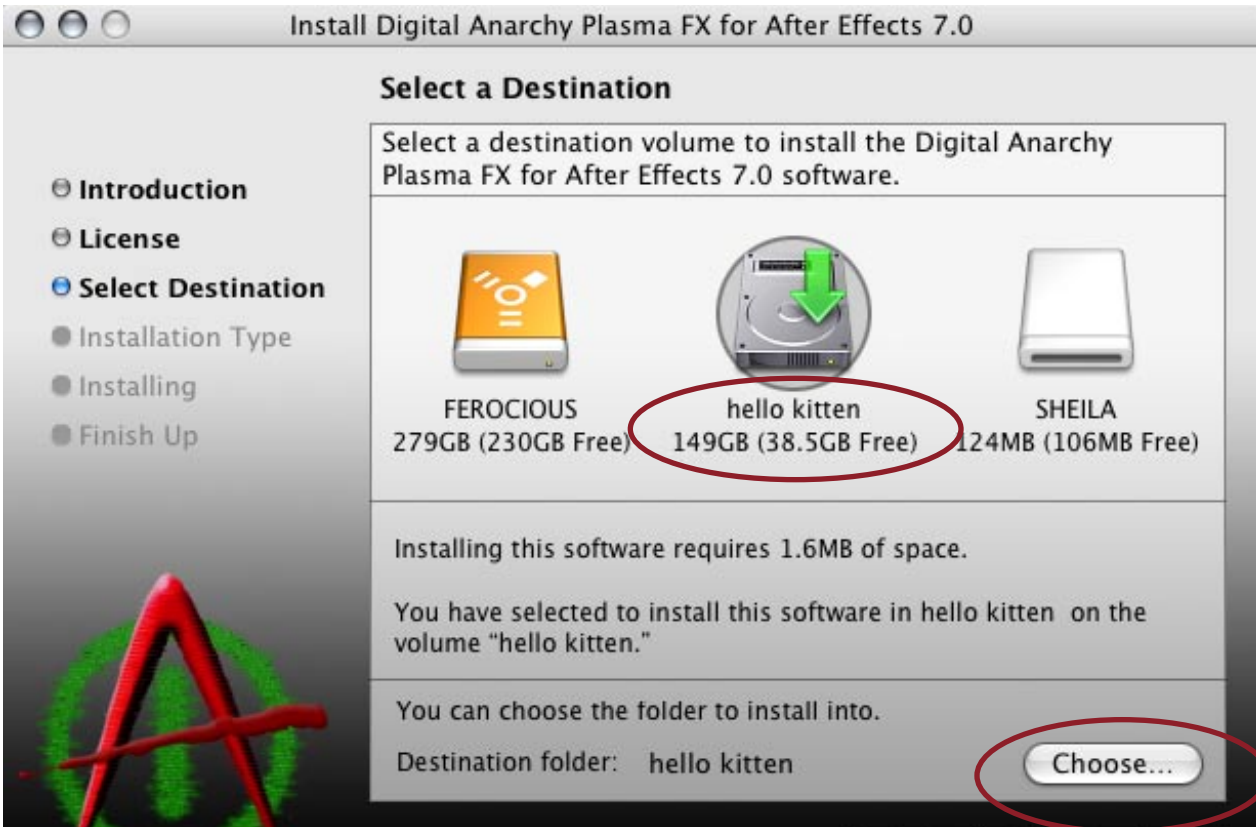
Once the Frameworks installation is finished, you will choose the correct After Effects installer. Choose between the installers for version 7.0, or for versions 6.5 or lower.



Once you have launched the correct After Effects installer, you will see the PlasmaFX installer screen. Click 'Continue' to accept the menu options.



For the AE installer, you will need to choose BOTH the install disk and the install location. (see next page for details)



For the install location, the plugin is being placed:  
Hard Drive/ Applications/ After Effects/ Plug-ins

